

SAX BARYTON

SWEET HOME CHICAGO

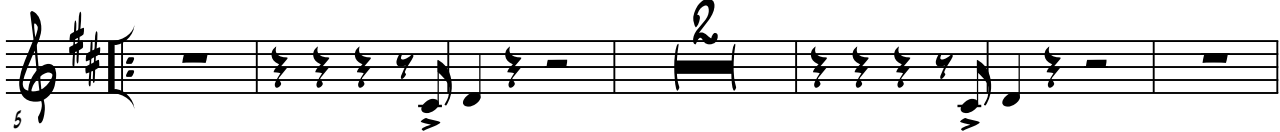
SHUFFLE ♩=120

WOODY PAYNE
ARRGT : JF JACOMINO



A

JOUER 2EME FOIS SEULEMENT



B E



C E



D CHORUS GUITARE

G CHORUS AD LIB



RIFF 1ERE FOIS SEULEMENT

SWEET HOME CHICAGO



Musical staff 1 (measures 48-53). Treble clef, key signature of two sharps (F# and C#), 4/4 time signature. Measure 48 starts with a whole rest. A hairpin crescendo is placed below the staff, starting at measure 50 and ending at measure 53. The staff concludes with a double bar line and repeat dots.

Musical staff 2 (measures 54-61). Treble clef, key signature of two sharps, 4/4 time signature. Measure 54 is marked with the number 54. A bracket labeled "POUR FINIR" spans measures 54 to 55. A circled "H" is placed above the staff at measure 56. Slurs with the number "8" are placed above the staff at measures 55, 57, and 59. The staff concludes with a double bar line and repeat dots.

Musical staff 3 (measures 62-66). Treble clef, key signature of two sharps, 4/4 time signature. Slurs with the number "8" are placed above the staff at measures 62 and 64. The staff concludes with a double bar line and repeat dots.

Musical staff 4 (measures 67-71). Treble clef, key signature of two sharps, 4/4 time signature. Measure 67 is marked with the number 67. Slurs with the number "8" are placed above the staff at measures 67 and 69. The staff concludes with a double bar line and repeat dots.

Musical staff 5 (measures 72-73). Treble clef, key signature of two sharps, 4/4 time signature. Measure 72 is marked with the number 72. The staff concludes with a double bar line and repeat dots.